

LumiDas-EX

Hazardous Location Fixture



FEATURES & SPECIFICATIONS

LumiDas EX series is designed to replace conventional Hazardous Location lamps. The product is compact and low weight compared to high-watt LED products or conventional hazardous location products. This LED luminaire is safe and easy to use in areas where flammable or explosive vapors or gases are present and hazardous areas where long life and low maintenance costs are desired.

Performance

Lumen Output : 8,400lm
 Efficacy : 105lm/W
 CRI : 80+

Electrical

Integral, High Efficiency Driver.
 Input Voltage : 120-277VAC or 347/480VAC, 50/60Hz
 Power Factor: >0.9
 Surge Protection : 15kV

Environmental

IP66(Wet Location)
 Operating Temperature : -25°C to 50°C (-13°F to 122 °F)
 Operation Humidity : 5 to 95%

Hazardous Locations

Class I, Division 2, Groups A, B, C, D
 Class II, Division 2, Groups F,G

Listing

UL(cUL) 844 : Listed
 UL(cUL) 1588 : Listed
 UL50E(NEMA4X) : Listed
 DLC:Pending
 FCC

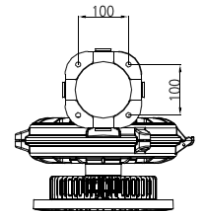
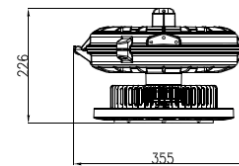
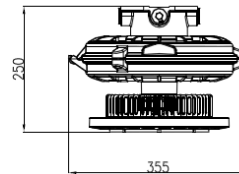
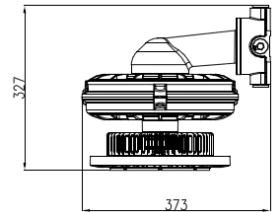
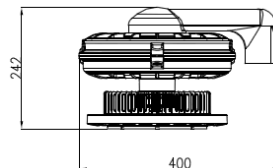
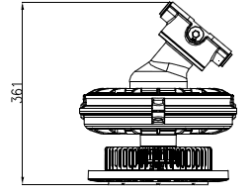
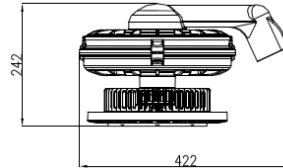
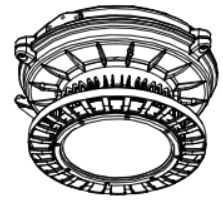
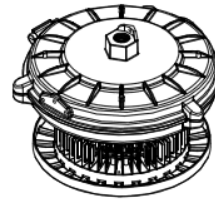


Warranty

5 YEARS limited warranty.
 Minimum 50,000 hours lifetime

LumiDas-EX 80W

Explosion Proof Lighting



All dimensions are millimeters
 Unless otherwise indicated

ORDERING INFORMATION

Example: EX80N-UM-D2BCE(DDC)

Model Name	Power Consumption	Input Voltage	Hazardous Locations	CCT	Optic	Option Cover	Option Luminaire Body
EX Explosion Proof	80N	UM : 120~277V CH : 347/480V	D2 : Division 2	D : 5,000K	D 120° : Diffused	C : Clear	A : Luminaire A (Ceiling etc) B : Luminaire B (Pendant, Swivel, Clamp)

Lead times will vary depending on order volumes and options selected. Consult with your sales representative.

Temperature Condition

Catalog No.	Class I, Division 2				Class II, Division 2	
	-25°C to 40°C ambient	-25°C to 50°C ambient	-40°C to 40°C ambient	-40°C to 50°C ambient	40°C ambient	50°C ambient
EX80-UM-D2XXX(DDX)	T5	T5			T4A	T4
EX80-CH-D2XXX(DDX)			T5	T5	T4A	T4

Family Tree

Ceiling :BCE

Wall 90: BW9

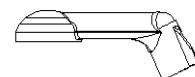
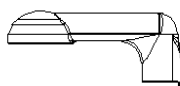
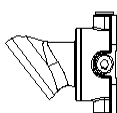
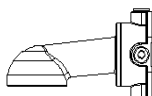
Wall 40 :BW4

Stanchion 90 1-1/2 : B92

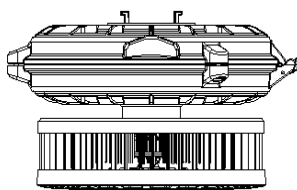
Stanchion 25 1-1/2 : B22

Stanchion 90 1-1/4 : B94

Stanchion 25 1-1/4 : B24



LED LUMINAIRE A
(COVER MODULE A)

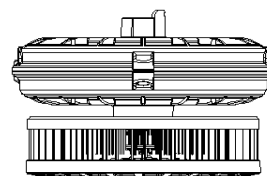
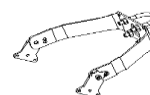
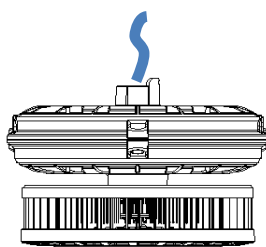


LED LUMINAIRE B
(COVER MODULE B)

Pendant : BPE

Swivel : BSW

Clamp : BCL



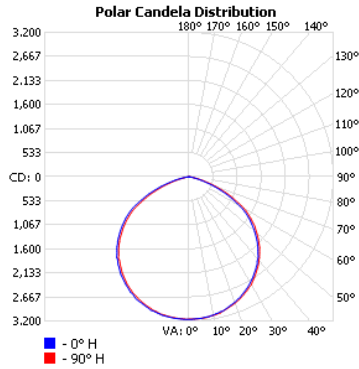
LumiDas-EX

Hazardous Location Fixture

PHOTOMETRICS

EX80-xx-xx(DDC-x), 8,400 delivered lumens, tested by Dongbu Lightec Lab, tested in accordance to IESNA LM-79

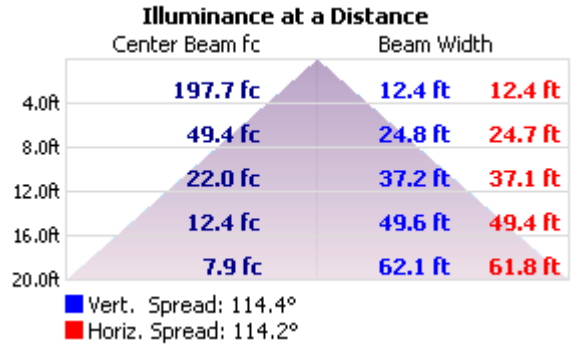
POLAR GRAPH



LUMENS PER ZONE

Zone	Lumens	% Total
0-10	299.8	3.4%
10-20	865.8	9.9%
20-30	1,329.4	15.2%
30-40	1,626.3	18.6%
40-50	1,707.7	19.5%
50-60	1,528.9	17.5%
60-70	1,013.2	11.6%
70-80	351.1	4.0%
80-90	36.2	0.4%

CONE DIAGRAM at 20 Ft



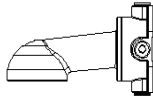
Mounting Option

Luminaire A (Ceiling etc)

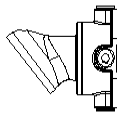
Ceiling :BCE



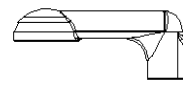
Wall 90: BW9



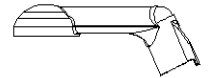
Wall 40 :BW4



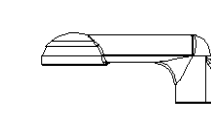
Stanchion 90 1-1/2 : B92



Stanchion 25 1-1/2 : B22



Stanchion 90 1-1/4 : B94



Stanchion 25 1-1/4 : B24

Luminaire B (Swivel, Clamp)

Swivel : BSW



Clamp : BCL

